



Summer Study Abroad Program 2025



1st week: May 26 to June 1

LUNDI
MONDAY

MARDI
TUESDAY

MERCREDI
WEDNESDAY

JEUDI
THURSDAY

VENDREDI
FRIDAY

SAMEDI
SATURDAY

8h00

30

9h00

30

10h00

30

11h00

30

12h00

30

13h00

30

14h00

30

15h00

30

16h00

30

17h00

Welcome and
Orientation



98AGR01 - A. Annes
Who is the French Farmer ?
Overview of the French
Agriculture

Room 30



98AGR02 - J. Frayssignes
Quality Signs
Roquefort Production

Room 30



FIELD VISIT
98ALI01

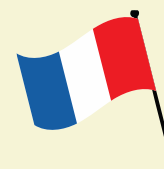
Roquefort Cheese Caves

Departure from the
residence at 8:00AM



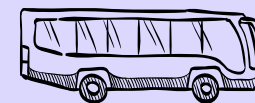
**98COM01 - M. Puech /
J. Gout**
French

Room 30-31



Hike in the
Pyrénées

Departure from the
residence at 8:00AM



Lunch Break
(Salon 3)

Lunch Break
(Salon 3)

Lunch Break
(Salon 3)

Lunch Break
(Salon 3)

Lunch Break
(Halles de la Cartoucherie)

**Adventure Track
in Toulouse**



Casual Drinks afterwards

98AGR01 - J. Carnine
French Culture and Cultural
Differences

Room 30

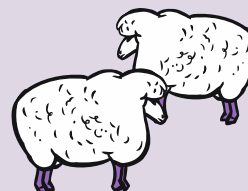


98AGR02 - C. Paes
Overview of Livestock
Production

Room 30

FIELD VISIT
98AGR02

Ferme des Bernat



98AGR02
Work in Autonomy

Room 30





Summer Study Abroad Program 2025



2nd week: June 2 to June 8

LUNDI
MONDAY

MARDI
TUESDAY

MERCREDI
WEDNESDAY

JEUDI
THURSDAY

VENDREDI
FRIDAY

SAMEDI
SATURDAY

8h00

30'

9h00

30'

10h00

30'

11h00

30'

12h00

30'

13h00

30'

14h00

30'

15h00

30'

16h00

30'

17h00

98ALIo1 - H. Tormo / B. Wahl
Food Presentation

Room 66-62



98ALIo2 - M. Gosset
Oenology 1

Room 62



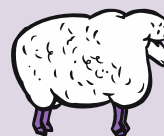
98ALIo1 - H. Tormo / B. Wahl
Day of Production 1

Room 66



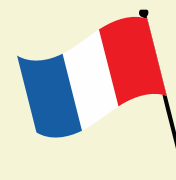
FIELD VISIT
98AGR02 - M. Genes
Animal Welfare Practice on
Lamothe Farm

Departure at 9:00AM
from "Impasse de Lisieux"



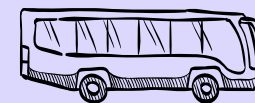
98COM01 - M. Puech / J.Gout
French

Room 18-19



Visit Bordeaux and Discover
"La Cité du Vin"

Departure from the
Residence at 8:00AM



Lunch Break
(Salon 3)

Lunch Break
(Salon 3)

Lunch Break
(Salon 3)

Lunch Break
(Salon 3)

Lunch Break
(Salon 3)

98ALIo2 - O. Geffroy
Enology Option Viticulture &
Vineyard Management

Room 62



98ALIo2 - O. Geffroy
Sensory Analysis

Room 66-62



98ALIo1 - H. Tormo / B. Wahl
Day of Production 1

Room 66



98ALIo2 - O. Geffroy / M. Gosset
Viticulture Serious Game -
Creativini
Room 62



98ALIo2 - I. Roullier
Wine Tasting & Discovery of
French Wine Regions

Room 62





Summer Study Abroad Program 2025



3rd week: June 9 to June 15

LUNDI
MONDAY

MARDI
TUESDAY

MERCREDI
WEDNESDAY

JEUDI
THURSDAY

VENREDI
FRIDAY

SAMEDI
SATURDAY

8h00

30

9h00

30

10h00

30

11h00

30

12h00

30

13h00

30

14h00

30

15h00

30

16h00

30

17h00

**98COM01 – M. Puech /
J.Gout**
French

Room 17-18



**98ALI02 – M. Gosset / O.
Geffroy**
Practical Winemaking
Food Lab

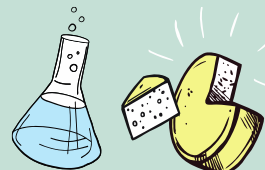


**98COM01 – M. Puech /
J.Gout**
French

Room 23-24



**98ALI01 – A. Lefebure / B.
Wahl**
Day of Preparation 2
Room 66



**98COM01 – M. Puech /
J.Gout**
French

Room 30-31



*Lunch Break
(Salon 3)*

*Lunch Break
(Salon 3)*

*Lunch Break
(Salon 3)*

*Lunch Break
(Salon 3)*

*Lunch Break
(Salon 3)*

98ALI02- M. Gosset
Oenology 2

Room 18



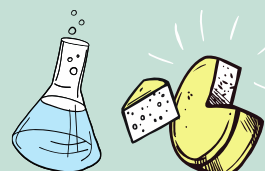
**98ALI02 – M. Gosset / O.
Geffroy**
Practical Winemaking
Food Lab



**98ALI01 – A. Lefebure / B.
Wahl**
Day of Preparation 2
Room 66-62



**98ALI01 – A. Lefebure / B.
Wahl**
Day of Preparation 2
Room 66



**Internship Presentation &
Attribution – K. Shamanova**



Free Week-End

**Don't hesitate to require
advices to organize your
week-end**



Summer Study Abroad Program 2025



4th week: June 16 to June 22

LUNDI
MONDAY










MARDI
TUESDAY

MERCREDI
WEDNESDAY

JEUDI
THURSDAY

VENDREDI
FRIDAY

SAMEDI
SATURDAY

8h00					
9h00		FIELD VISIT 98ALi02 - M. Gosset / O. Geffroy			
10h00	98COM01 – M. Puech / J.Gout French Room 19-17 	Domaine GAYRARD Departure at 8:30AM from "Impasse de Lisieux" 	98COM01 – M. Puech / J.Gout French Room 31-32 	98AGR01 & 98AGR02 Final Examination Room 31 	98COM01 French Examination Room 31 
11h00					End of the on-campus part Departure to Internship Places
12h00					
13h00	Lunch Break (Salon 3)	Lunch Break (Salon 3)	Lunch Break (Salon 3)	Lunch Break (Salon 3)	
14h00	FIELD VISIT 98ALi01 - B. Wahl Brasserie Caporal Departure from Salon 3 	98ALi01 - L. Volmerange Sensory Analysis Room 32 	98ALi02 - O. Geffroy / M. Gosset Examination Oral Room 31 	98ALi01 - L. Volmerange Examination Food Room 31 	
15h00					
16h00					
17h00					